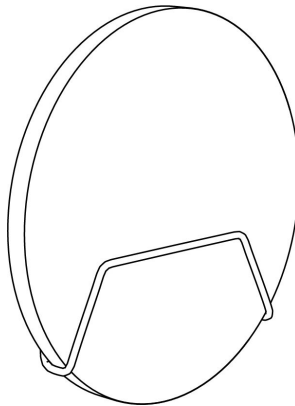
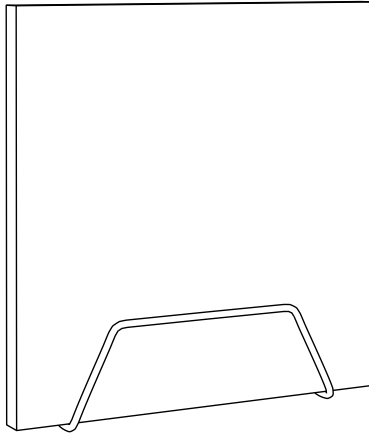


Assembly instructions

Clamp wall





Check to make sure that the bracket is perfectly horizontal. Then mark the position of the fixing screws.



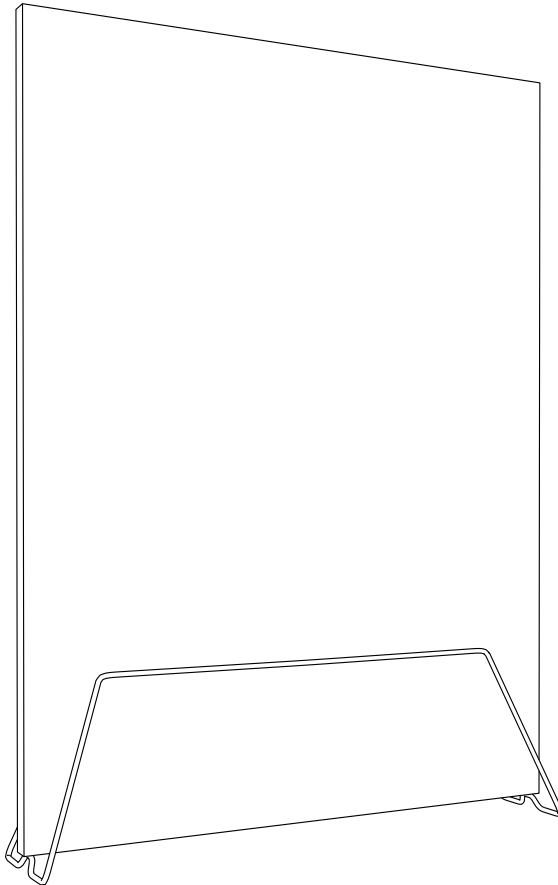
Secure the bracket in place with suitable screws.



Slide the sound absorber into place in the bracket.

Assembly instructions

Clamp floor



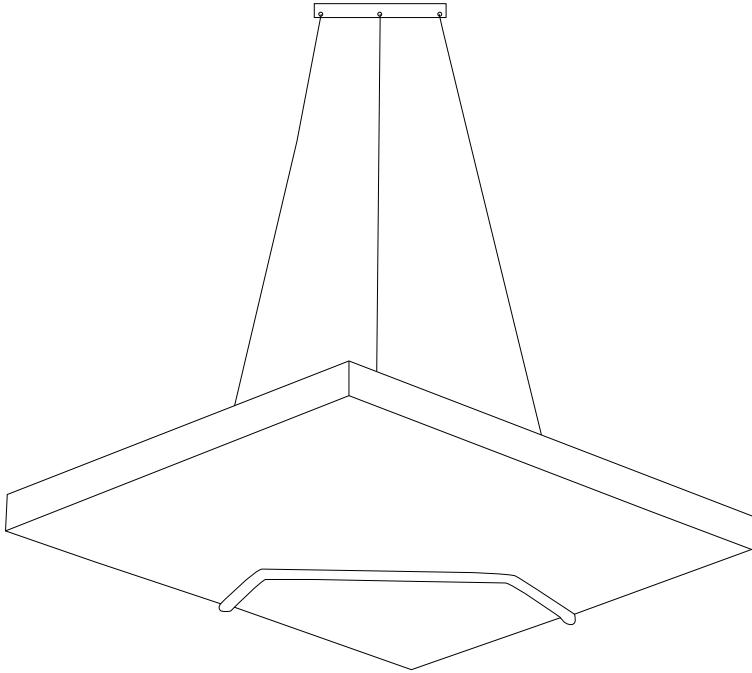


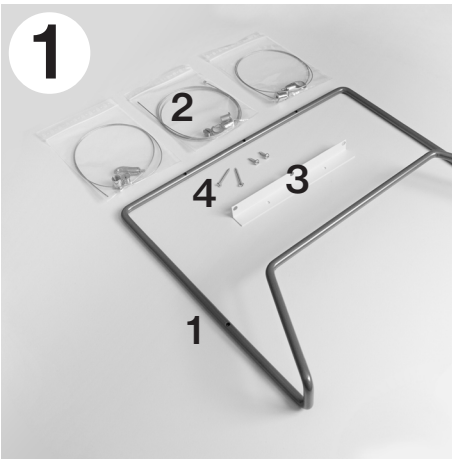
Fit the sound absorber in place on the frame using the 3 wood screws supplied. Make sure that the outside edges of the sound absorber project 40 mm beyond the frame.



Assembly instructions

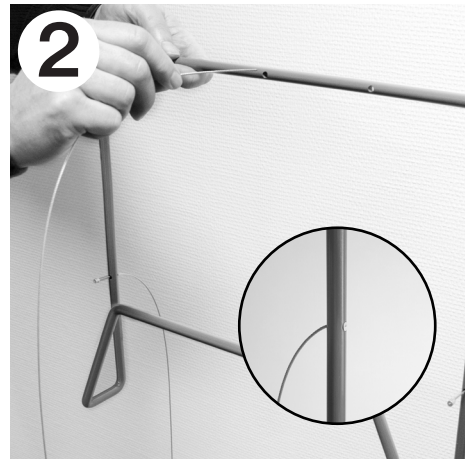
Clamp ceiling



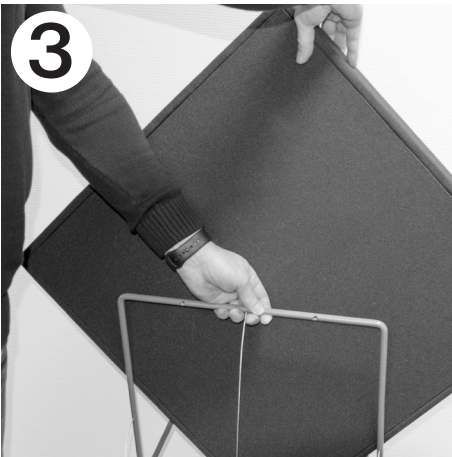


The sound absorber is supplied with the following components for assembly:

1. Bracket
2. Wire with adjustable cable lock (3 pcs)
3. Ceiling fitting
4. Assembly screws (4 pcs)



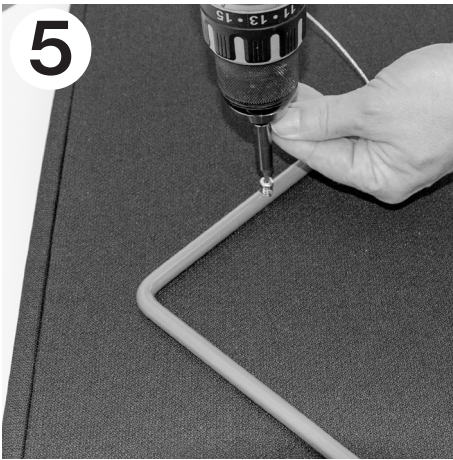
Fit the wires so that the end stops slot all the way into the counterbore on the bracket.



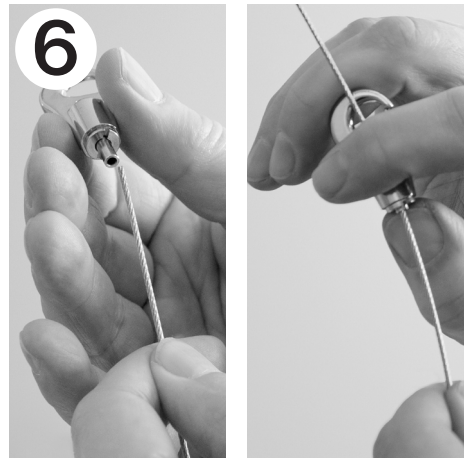
Slide the sound absorber into place in the bracket with the reverse side facing the wires.



Adjust the sound absorber, so that it is centred in the bracket.



Use the two small wood screws supplied to secure the sound absorber in place on the bracket.



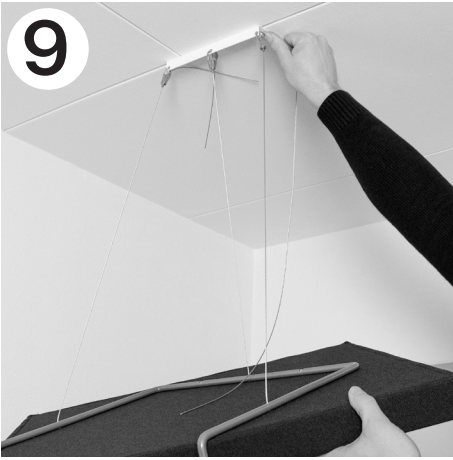
Slide the adjustable wire locks into place on the three wires. To release the wire, simply press the end of the lock. This makes adjusting the length of the wire easy.



Mount the roof bracket with the supplied wooden screws. (Other attachment may be required for porous material).



While supporting the sound absorber, hook it in place on the ceiling fitting, as shown in the photo



Use the wire locks in the hooks to adjust the length and angle.



Surplus wire can be snipped off after the necessary adjustments have been made.



Installed and ready for use.



Installed and ready for use.